



The Navigator

May 2020

The Newsletter of the Alamo Squadron IPMS Chapter

The San Antonio chapter of the International Plastic Modelers' Society

A registered 501c-7 organization

Team Lead for the National IPMS/USA Convention: 2020
IPMS/USA Region 6 Chapter of the Year: 2016

IPMS/USA Region 6 Newsletter of the Year: 2017
IPMS/USA Chapter of the Year: 1999 & 2005



[Stay-at-home, Stir-Crazy Newsletter Edition]

1. [President's Column](#)
2. [Kit Review](#)
3. [Works in Progress](#)
4. [Building the Discovery](#)
– Part 6
5. [Kit Review and Build](#)
6. [On the Horizon](#)
7. [Our Fearless Leaders](#)
8. [Acknowledgements](#)
9. [One More Thing...](#)

Odd times for our monthly get-together sessions as well as model contest season but kit building (and acquiring) goes on and the in-home diversion becomes de rigueur. This month's issue says as much with many generous submissions from club members sharing their at-home completions or works in progress. Many, many thanks!

FOR Modelers and BY Modelers ABOUT modeling...

PRESIDENT'S COLUMN

By Herb Scranton III IPMS #48314

From Behind the Wheel...



Greetings Alamo Squadron club members.

First, I would like to thank our membership for the honor of serving you as your president and I would also like thank Keith Rule and Chris Settle for joining me as your elected officials.

Just in case you did not receive my last email, our May meeting will be online again at 7PM this Thursday evening May 7. Here is the link to join us.

<https://global.gotomeeting.com/join/818489709>.

Depending on what our local and state officials dictate, we are planning to have our regular June meeting. We may have to make some arrangements for social distancing and maybe the wearing of protective masks. I will keep you posted when I know more.

Our model summit award program has taken a hit because of the quarantine and lack of live meetings. So to rectify this, send me an email with a short description or picture of any model you have started or done more than 50% of the work on it since the 1st of February I will give you a credit towards your summit award. Please one email per completed project, include Date of project, month/year started, month/year completed, Make of project, scale, and project name. My email is: oldsoldier72@gmail.com.

I plan on making some rule changes to the Model Summit Awards program after my first EB meeting and will post the changes in a separate letter to our newsletter group.

Lastly, I miss meeting with you wonderful and talented folks and look forward to seeing you all very soon: in the meantime, please take appropriate precautions for you and your family.

Cheers, Herb Scranton III

KIT REVIEW

Article and photos by Dana Mathes

1/32 Monogram Bell AH-1G Cobra Helicopter

Subject

Over the past few years, I have been building a collection of Vietnam War subjects. This effort has included armored vehicles, an F-4E Phantom II, and several riverine subjects. This year I thought I would try a couple more aircraft projects. My preferred scales are 1/32 or 1/35. There are several iconic US aircraft from this period, but perhaps the one with the baddest attitude is the famous AH-1G Cobra helicopter gunship (think “flying tank”). Affectionately known as the “Snake,” it was developed to add firepower for the close air support mission of the US Army’s air arm. With a 7.62 mm minigun and 40 mm grenade launcher in the nose and underwing rockets pods, it was a formidable weapon system and one capable of multiple configurations. The first Cobras saw action in 1967. Their upgraded descendants are still in service in many countries around the world.

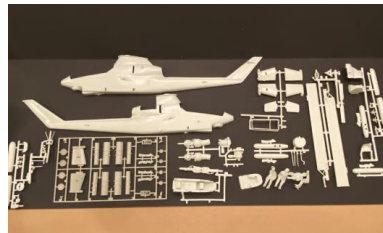
Kit

To model a Vietnam War only one game in town: kit (*right photo*→). It Since then, it has been latest version, which sprue, was issued by now somewhat scarce. model contests, I

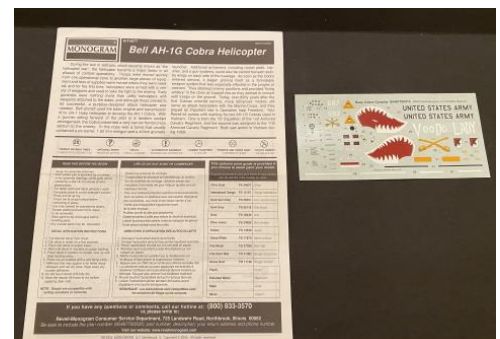


Snake in 1/32 scale, there is really the Revell-Monogram 1/32 AH-1G was first produced in early 1970s. re-issued a couple of times. The includes an additional armament Monogram in 2004. These kits are After failing to find one at local secured a 2004 kit on eBay.

This is an old but classic kit. It is based Cobra to take the field. Being a and fits are poor to average relative to kit with a small part count and few main sprues are done in light gray armament sprue is molded in dark is provided with the canopy and light fuselage halves and rotor blades that may require some straightening. The detailing in the cockpit, rotor assembly, and armament is sparse. There is a small amount of flash on some of the sprues and the molding lines are heavy on some parts. The instruction sheet is clear and easy to follow. The waterslide decals are colorful and include the Cobra’s famous shark mouth



on the earliest version of the vintage kit, its molding details the modern kits. This is a simple hard-to-handle detail parts. The plastic while the newer gray (*←left photo*). A clear sprue lenses (*photo below*↓). There is some minor warpage in the



(photo on previous page). The pilot figures are quite simple and do not enhance the model. The kit offers some interesting options. Rocket pods or mini-guns can be configured under the wings. The side access panel can be left open to reveal the engine. Two marking schemes are provided that depict aircraft from 1969.

References

References are readily available for the Cobra gunship modeler. Squadron Productions published *Gunslingers in Action* in Vietnam era combat followed that with the AH-2002 (right photo→). three books on the AH-1 several hardcover books as well as first person service in these the *Scalemates* website



1974. This has many service pictures. They 1 *Cobra Walkaround* in Osprey has published helicopters. Amazon lists about the Cobra gunships accounts of Vietnam helicopters. In addition, provides a number of

excellent build descriptions and photographs of completed projects. These models incorporated numerous aftermarket details.¹ Internet searches will point you to several different pages describing the Snake. Some these sites are useful. However, “viewer discretion is advised” as some of these websites indiscriminately mix pictures of the Vietnam-era aircraft and later versions.

Aftermarket Options

Scalemates lists several aftermarket options for this kit: resin cockpit upgrades, resin armament details, photoetch details, and decals sheets. Unfortunately, almost of all of them are out of production and unavailable from the vendors.² I managed to find the Eduard box at a contest vendor table cockpit and armament. It also the fuselage. Simple details such as cables in the cockpit, and mini-gun be easily scratch-built.



have not seen them on eBay over the past Werner’s Wings aftermarket canopy.³ I photoetch set while digging thorough a (←left photo). It has many parts for the includes some miscellaneous details for power cables to the armament pods, barrels, and small antennas can probably

Summary

The 1/32 Monogram AH-1G Cobra kit is an oldie but a goodie. If you want a large-scale helicopter project that will be impressive if built out-of-the box this project is a good fit. It lends itself to additional detailing, but the aftermarket options are limited, and you will need to consider kit-bashing options or scratch-building to enhance it.

¹ See https://www.scalemates.com/search.php?fkSECTION%5B%5D=All&q=1%2F32+ah-1g*#.

² Cobra Company resin items are now listed on the Lone Star Model website, but the vendor indicated that these are not readily available. See <https://www.lonestarmodels.com/store>

³ See <https://wernerswings.com/products/>.

WORKS IN PROGRESS

Special Edition – Home Doings

As we hunkered down the past month, here are some works in progress and completions we may be seeing in person (or not) in the future.



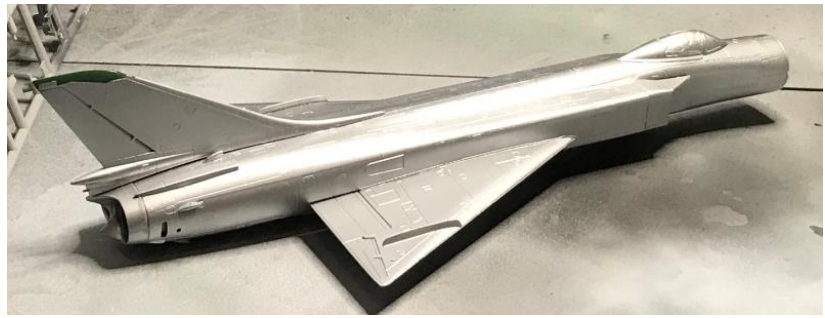
↑ Above from **Rowdy Bricco**: “1:48 Tamiya bf109e that I’ll be doing in the mottled scheme from jg27 in Africa.”



← Two pics on the left from **Don Weaver**:
“Photos of completed 1/72 Trumpeter Su-15TM (Flagon-F)”



←



Also, from Don Weaver, above ↑ and to the left: ← “1/72 Trumpeter Su-15 (Flagon -A) after painting with Vallejo Aluminum over black primer, getting ready to start final assembly.”

This, too, below from Don Weaver: ↓ “I’m fixing Pitot tube on Su-15TM and starting work on 1/48 Otaki P-47D.” He also offers his forward-looking economic strategy: “Need Hobby shops to open so I can spend my Coronavirus money when I get it!”



Photos to the right from **Dick Montgomery**: →
“Airfix P-51 48th scale. I needed a P-51 upon which to apply decals being reviewed for IPMS.”



These 3 photos above (and at right) also from **Dick Montgomery**:
“AmTech Hs-123A-1 48th scale. Another bi-wing for the collection. The kit is a bit of a challenge with large gaps and loosely fitted wing struts, although the cockpit has considerable detail.”



← ↑

And lastly also from **Dick Montgomery**, are these 2 pictures (left and above): *“Monogram's classic 1985 F-101 Voodoo.”*

A multitude of works from Bob Stiegel:



← Left: "F-15E Strike Eagle -- Academy 1/72 kit with stores from three Hasegawa weapons sets and decals from Astra Decals for an aircraft of the 494th FS, 48 FW at RAF Lakenheath."



"USS Hornet - Tamiya 1/700 kit, with 16 B-25s for the Doolittle Raid on deck ↑ plus 5 F4F-4s from the Hornet's air group."

Right: "Humber Mk II Armored Car -- Old Matchbox 1/72 kit, built out of the box." →



Above: ↑ "Mirage F-1 -- Airfix (MPC) 1/72 kit with Carpena Decals markings for the Jordanian AF in 1982."

Right: "Armstrong Whitworth Siskin IIIa -- Another old Matchbox 1/72 kit built out of the box, with Modeldecals markings for RAF 43 Squadron, Tangmere, late 1920s." →



Below from **Gerardo Escobedo**: *“Here are my photos of Lent/Quarantine Gundam #1: MG Gundam Seed Strike Gundam + I.W.S.P. (Integrated Weapons Systems Pack). It is a custom paint and concept. I used AMMO paints, Gundam Marker Airbrush System, and Tamiya weathering powders.”*



Also, below from **Gerardo**: *“Here are my photos of Lent/Quarantine Gundam #2: Gundam RX-78-2 Gundam Base exclusive edition in clear colors. This is the kit I won in the 2nd round at the Gundam Grand Prix 2019. The "Gundam Base" is a store in Japan that sells exclusive model kits, not available anywhere else... or that is the theory. The Gundam is created in translucent plastic and other different colors. Both Gundams are in 1/100 scale. Both Gundams are Bandai.”*



These next four are from Michael Buckley:

"Here are some works completed in past week as best use of Quarantine Time--I find myself at home with total knee replacement mid-March, so timing for recovery was good."

Michael also wants to remind us of his personal kit building strategy; *"I have a time budget for every model--it is 15 hours each--requiring some gang assembly and on-sprue painting."*



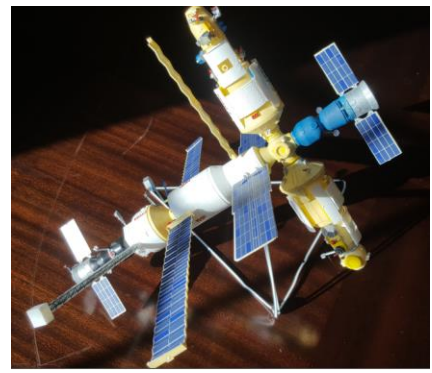
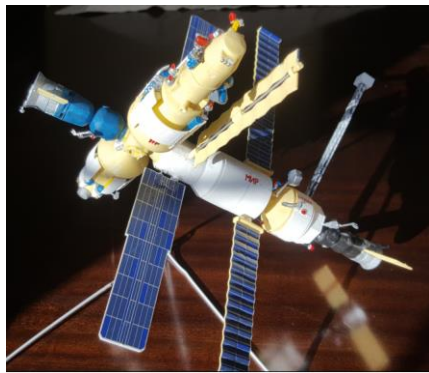
1. *Civil War Battle of the Ironclads--15 Dollar asked -
-\$8 bought at Alamo swap meet--USS Monitor
revolutionary design vs CSF Merrimack a re-
purposed sailing warship hull with sloped 8" armor---
after a 40 min slugfest both ships retired claiming
victory.*



2. *Pan Am China Clipper ---bought this 1/144 scale at
Alamo Squad swap meet for 5 dollars; beautiful
aeronautical lines featured in soft-hued 1930's
travel posters. Sadly, no 1/72 scale exists to my
knowledge.*



3. *Napoleonic soldiers 1 " tall cast white metal re-
glued and retouched--from freebie handout at
Alamo Squad ---rearranged into a skirmish vignette--
--last visages of flamboyant uniforms, the rise of
fast moving flank attacks , aimed fire vs volley, and
light artillery to break massed echelons.*



4. (above↑) *MIR Russian Space Station. "Fairly rare Heller Space Station-- important because Russia was first to deploy a life-supporting human habitat and pioneered several key innovations adopted by the international Space Station--expandable solar arrays; re-use of ascent Capsules as Permanent Components; use of 4-way Capsule Docking Hubs to host expansion with Payload sections and re-supply; design and deployment of Heavy Lift Arm."*

Three WIP models from Dana Mathes:

Two photos below and one to the right: "Here is the 1/35 TAKOM M9 ACE bulldozer, 95% complete."



Five photos below: "WIP photos of 1/35 Academy K2 Black Panther project: box, build with aftermarket barrel, tracks, aftermarket decals, aftermarket camo net."



Five photos below: "WIP photos for a 1/48 Monogram Little Boy atomic bomb and a Monogram 1/128 Titan II missile, both OOB. Also included photos of a jig I was using to try use to paint the nose cap of the missile."





BUILDING THE DISCOVERY –

PART 6

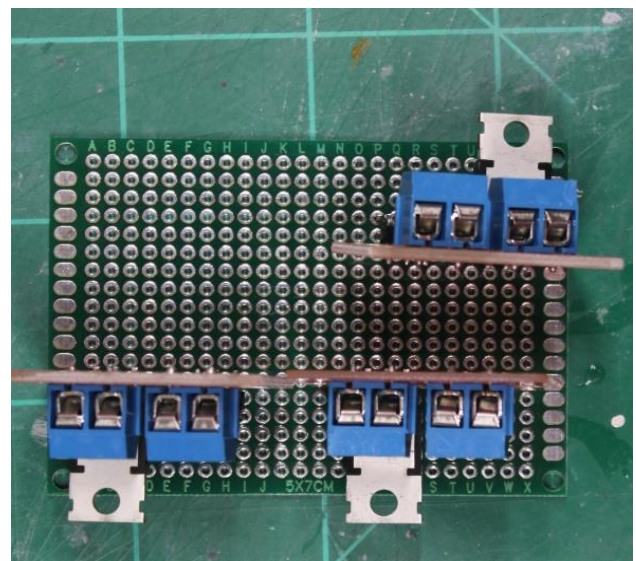
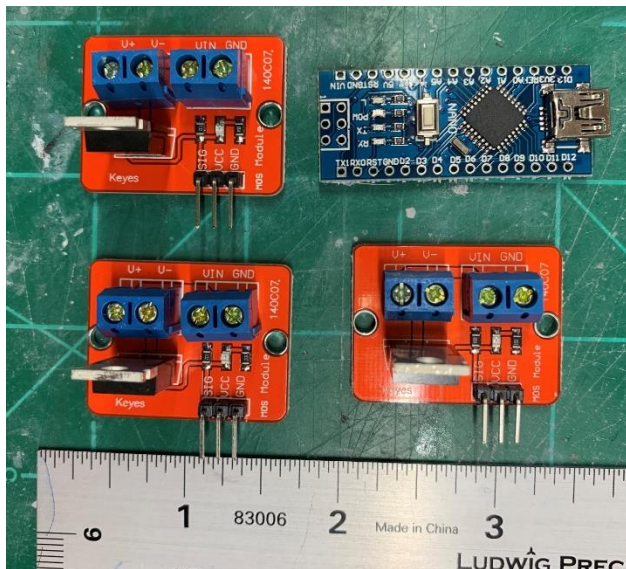
Article and Photos by Craig Gregory

Electronics

In part 5 of this series, I assembled the mechanical module. Modifications were adding access for the electronics package and adding an additional bulkhead to support the model's backbone. The part count for the mechanical module is 19; total assembled part count to-date: 431.

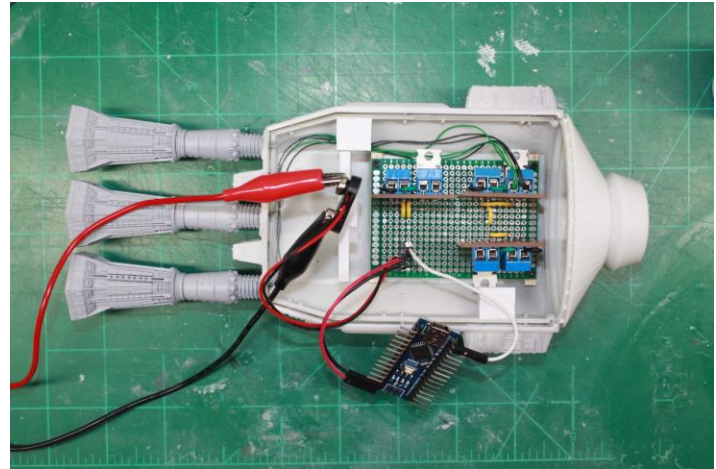
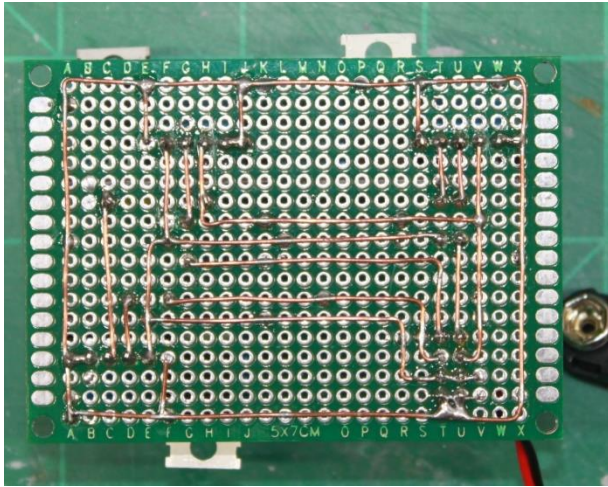
I was a little premature in part 5 of this build log. I opened with a description and pictures of the electronics I am using to light the Discovery. I intended to conclude that article with the assembly and mounting of the electronics package but did not complete it before the publishing deadline. At least I showed what I needed to fit in the mechanical module.

To repeat, I have standardized on how I light my modeling projects. (Keep in mind that I tend to overengineer things.) I light all my projects with LEDs using a 9-volt power source. With an Arduino micro-controller, I control any special effects like flashing and adjusting brightness. Since the Arduino can only power a few LEDs, I drive the LEDs with MOSFET drivers to amplify the signal from the micro-controller.



A prototyping board was used to mount and connect the components. The components are positioned by inserting the 3-pin connector of the MOSFET modules into their proper location on the board. The pins are soldered on the underside of the board to secure the components into place. Note that the Arduino will be mounted separately in the opposite side of the clam shell mechanical module.

modules. Just like plastic modeling, do not be afraid of experimenting and trying new techniques. Any mistakes can usually be fixed.



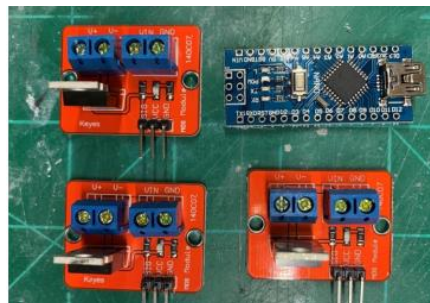
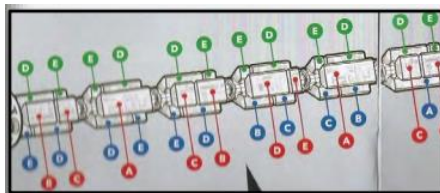
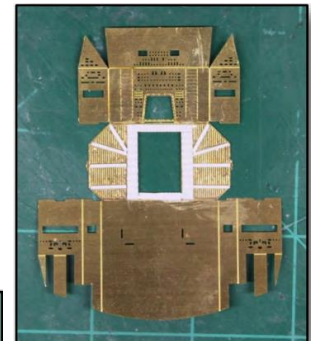
Adding the 3 propulsion units was a simple matter of drilling holes for the wires and gluing. I am not satisfied with the alignment and will need to do some correction.

My building count has only included parts from the model kit and from the aftermarket photoetch kit I purchased. It does not include the electronic components or small plastic parts I have scratched built. Therefore, the part count for the electronics is 0; total assembled part count to-date: 431.



The Build Story series thus far.

- PART I – BUILDING THE DISCOVERY (APR 2019)
- PART II – COMMAND & CONTROL (MAY 2019)
- PART III – BRIDGING THE GAP (JUN 2019)
- PART IV – PROPULSION (OCT/NOV 2019)
- PART V – MECHANICAL (DEC 2019)



KIT REVIEW AND BUILD

Porsche 935 [K3]

Article and photos by Keith Rule

It was sometime after 2 PM on June 10th, 1979 at the Circuit de la Sarthe, France. The 47th 24 Hours of Le Mans had concluded with Car 41, the Porsche 935 K3 from Kremer Racing standing at the top of the podium, having won the rain-soaked race. The car was driven by Klaus Ludwig, Don Whittington, and Bill Whittington.



The kit box and instructions indicate manufacturers as Platz Co. Ltd. And NuNu Hobby Model Kit by Si Nok Development Company Ltd., both of Japan. The kit is molded in white and black with the usual supporting parts in clear and two mirrors in chrome. We also have a fret of photoetch, a sheet of mesh, and two sheets of decals. The paint color chart is on the outside of the box. This allows the buyer to see what he needs before purchase. The box photos of the model were somewhat helpful during assembly.

There are two sets of instructions; one for the plastic kit, and one for the photoetch. The builder needs to review both sets before assembly to understand the photoetch substitutes and additions. Molded in black and white,

youngsters could build a reasonable model by brush painting some details, assembling the parts, and adding the decals and maybe the photoetch (no spray painting).

Beginning assembly, I found minimal flash and mold line cleanup. Parts were prepped, primed, and airbrushed per paint chart. Personally, I found the paint mix of copper and steel for the exhaust system to appear odd, so I recoated these parts in steel. The fit and assembly of this exhaust system was fiddly (is this a real word?) and may not clear the rear of the body without some mockup. Remainder of chassis and interior parts fit without issue. The body and air foil are molded in 13 parts, which makes assembly challenging. This is, however, unavoidable considering the complex shape of the body. With patience, care, and some strategic clamping, I was able to get it assembled. A coat of gray primer revealed a few small panel line imperfections that could be puttied and re-scribed. After some thought, I decided to go ahead with the extra work. Some modelers may be happy with their



results without this extra step. After the extra sanding and priming (final coat in white), the body was painted Tamiya Gloss White. I was very concerned about placing the black, red, and orange stripe decal. Not only are long decals like this difficult, but this one went over the multi-ridged hood louvers! So, I decided to put it on before the clear coat. If I messed it up, I could then tape and paint the stripes. But



this decal, like all the decals in this kit, went on perfectly. I then used my hobby knife with a new blade to cut the decal at the louver openings. I little coaxing from Microsol, and the decal laid down perfectly. Voila! The body was then clear coated with five coats of Testors Extreme Lacquer, set aside for 10 days, and polished with 2000 through 7000 grit sandpaper, and Meguiars

Scratch X 2.0. Decals (did I say they were wonderful) were then applied per instructions. I used a circle template to cut the hood decals where they fit over the hood caps before installation. I then touched up the edge of the hood caps with semi-gloss black.

Final assembly was straight forward. It was necessary to file/sand the window perimeters in order for them to set into the openings after the body was painted (although I masked these areas before clear coat). The windows were then taped and painted semi-gloss black per instructions. Small parts (wipers, door handles, taillights, etc.) were brush painted and installed. The chassis/interior unit fits perfectly to the body. This is not always the case in many auto kits. The use of two male/female fittings at both front and rear to fit these two components together is a simple and ideal method that could be copied for many kits. I actually fit the body to the chassis/interior before most decaling and small body parts, but this choice is up to the individual modeler.



This is my first kit by Platz/NuNu and I found it to be a very



pleasant and rewarding project. I recommend this kit to all modelers, no matter skill level.

Keith Rule
Vice President
Alamo Squadron
San Antonio, Texas



ON THE HORIZON

Kit of the Month Submittals

Each month club members are encouraged to bring one of their recent acquisitions to the meeting and open its box to let others peek inside. With a few brief comments and questions answered, we will get to know what is in the box and, chances are, rush home to order a copy. When you are ready to share your experience and thoughts, contact and coordinate with Club President Herb Scranton III at oldsoldier72@gmail.com.

2020 Monthly Club Contest Themes and Presentation/Demos/Programs

Date*	Contest Theme ¹	Program ²	Presenter
May 7	Whenever we get around to it hopefully, we will restart these sessions onsite and in person.		
Jun 4			
Jul 2			


*First Thursday of the month.

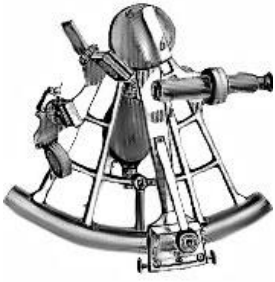
Source: ¹ <http://www.alamosquadron.com/monthly-contest.html>

² <http://www.alamosquadron.com/program-schedule.html>

Upcoming IPMS Region 6 Area Club Events

Provided by Dick Montgomery IPMS #14003

Date	Title	Contact	Location	Address
June 6, 2020 Canceled; Not Rescheduled	Scalefest 2020 Contest includes all modeling genres. Vendor Area http://www.ipmsnct.net/Scalefest.htm	Randy Spurr- scalefest@gmail.com	Grapevine Convention Ctr.	1209 S. Main Grapevine, TX 76051
June 13, 2020	SoonerCon 2020 http://www.ipmsmetrokc.com/soonercon-2020.html	(Building is named "The Cube" north of main church building.) Richard Fisher – challenger@challenger-n-scale.com	Council Road Baptist Church –	7903 NW 30th Bethany, OK 73008
June 20, 2020	Northshore Scale Modelers Expo https://northshoremodelers.net	Warren Dickerson – northshore.scale.modelers@gmail.com		Covington, LA 70433
July 11, 2020	HAMS 14 th Annual Model Care Show & Contest An Automotives Show. https://www.ipms-hams.org/	Rob McQuown – Robert.mcquown@sbcglobla.net	Cypress Creek Christian Community Ctr.	6823 Cypresswood Dr, Spring, TX 77379
July 29-Aug 1, 2020	2020 IPMS National Convention Convention website: http://www.nats2020.com/ IPMS-USA website: http://www.ipmsusa.org/ 4 Days of seminars, presentations, massive vendor area, local tours, great food, and model contest – All Located Deep in the Heart of Texas	 COME AND MAKE IT IPMS/USA NATIONAL CONVENTION SAN MARCOS, TEXAS JUL. 29 - AUG. 1, 2020 Convention Dir - Len Pilhofer – director.nats2020@gmail.com Vendor Coord - Craig Gregory - vendor.nats2020@gmail.com	Embassy Suites & Convention Ctr.	San Marcos, TX (between Austin and San Antonio) 1001 E McCarty Ln San Marcos, TX 78666
March 28, 2020 Rescheduled for August 15, 2020	RiverCon IX http://www.ipmsredrivermodelers.org/	Andy Bloom – Bloom4him@hotmail.com	LSUS University Center	One University Place Shreveport, LA 71111
April 18, 2020 Rescheduled for August 22, 2020	Route 66 Model Expo https://www.tulsaipms.org/ Contest includes all modeling genres. Vendor Area www.tulsaipms.com	Greg Kittinger – greg.kittinger@mail.com	Bixby Community Center in Bixby OK.	211 N Cabaniss Ave, Bixby, OK 74008
April 25, 2020 Future Date to be determined	Modelmania 2020 Contest includes all modeling genres. Vendor Area http://www.ipms-houston.org/?page_id=11	Ken Jackson – kw.jackson.1@hotmail.com	Stafford Center	10505 Cash Road, Stafford, TX 77477



CLUB ANNOUNCEMENTS

Next Club Meeting

**Online Thursday, May 7 at 7PM.
Link provided in above President's Column.**



Newsletter Article Contributions



Alamo Squadrons' newsletter, "*The Navigator*", is published monthly by the IPMS/USA Alamo Squadron club of San Antonio Texas intended for the enjoyment of the members of Alamo Squadron and its friends around the world. Articles, product reviews, news items, and other hobby-related contributions are most welcome. Send written text files or photos and web site URLs as well as any overall comments/suggestions feedback to our editor, Sam Casas at scasas002@satx.rr.com.

Next Issue: June 2020

Target Release Date: Sun May 31

Article/Photo Submissions Are Due: Fri May 29

Website Biographies of Club Members

This is a way for members to learn a little bit of modeling-related information of their club mates to facilitate the sharing of knowledge and techniques in all modeling genres and various areas. In no way is this mandatory and only if you wish to share your info with other club members should you participate. Be aware whatever is posted on the Alamo Squadron website becomes open to the all the world... there are no security controls on our website. If you wish to have your bio published, please reach out to Herb at oldsoldier72@hotmail.com. Here is a link to the bios already on file for your review and for others to verify that their information is correct: alamosquadron.com/members.html



OUR FEARLESS LEADERS

Executive Board 2019-2020

President

Herb Scranton III IPMS #48314

Vice-President

Keith Rule

Treasurer

Chris Settle

About Alamo Squadron

IPMS/USA Alamo Squadron was founded on November 17th, 1977 in San Antonio, Texas, for the enjoyment of building scale models and the camaraderie of its members. It is a hobby-centered social organization which, at its core, is focused on scale modeling of all kinds. It is an excellent source of information for those who wish to enhance modeling skills and improve modeling techniques and is open and inviting to visitors/guests at all skill levels with a variety of modeling interests. Annual dues are \$12.00 a year paid to the Club Treasurer on September 1st of each year.



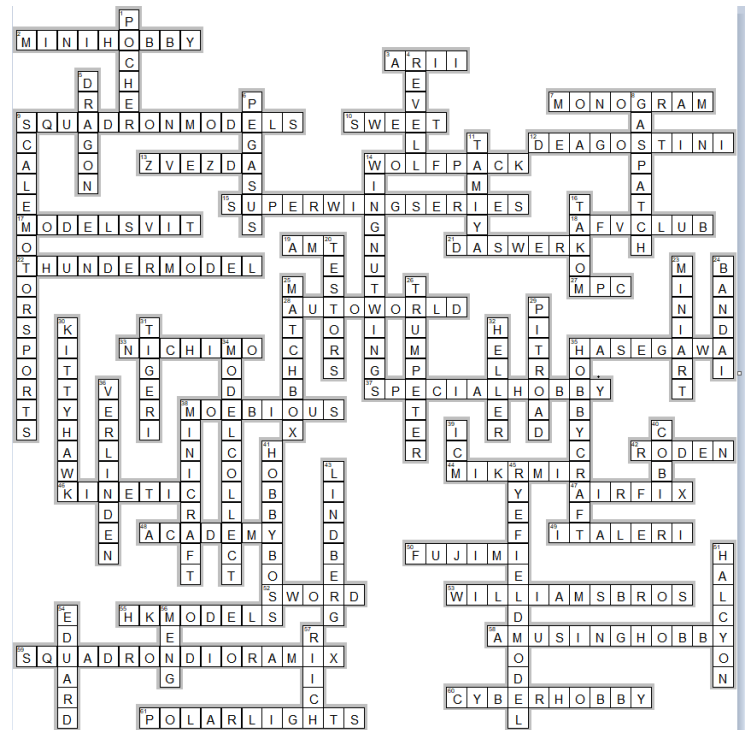
QR Code for the club website. Scan it with your cell phone's QR software to get to our web site!

www.alamosquadron.com



QR Code for the club Facebook Page. Scan it with your cell phone's QR software to get to our home on FB.

(below, somewhere else in this issue)





NATIONAL MEMBERSHIP

IPMS/USA is an organization dedicated to the hobby of Scale Modeling. Yearly membership includes a hard copy of the outstanding IPMS Journal mailed out six times a year, which is full of stories of interest on modeling subjects such as aircraft, armor, automotive, ships and figures. There are full listings of IPMS contests and swap meets, hints and tips articles and kit reviews. Being a member also allows one to participate in IPMS/USA sanctioned Regional Contests and the world-famous National Convention held each summer. You'll also have access to the online Member's Forum where a wide variety of society and modeling topics are discussed. In addition, many hobby shops offer discounts to IPMS/USA members. Check out the www.ipmsusa.org website for more information.

Note the change to the IPMS mailing address:

IPMS/USA MEMBERSHIP FORM			
IPMS No.:	Name: _____		
	<small>If Renewing</small>	<small>First</small>	<small>Middle</small> <small>Last</small>
Address: _____			
City: _____	State: _____	Zip: _____	
Phone: _____	E-mail: _____		
Signature (required by P.O.): _____			
Type of Membership	<input type="checkbox"/> Adult, 1 Year: \$30	<input type="checkbox"/> Adult, 2 Years: \$58	<input type="checkbox"/> Adult, 3 Years: \$86
<input type="checkbox"/> Junior (Under 18 Years) \$17	<input type="checkbox"/> Family, 1 Year: \$35 (Adult + \$5, One Set Journals)	How Many Cards? _____	
<input type="checkbox"/> Canada & Mexico: \$35	<input type="checkbox"/> Other / Foreign: \$38 (Surface) Checks must be drawn on a US bank or international money order		
Payment Method:	<input type="checkbox"/> Check	<input type="checkbox"/> Money Order	
Chapter Affiliation, (if any): _____			
If Recommended by an IPMS Member, Please List His / Her Name and Member Number:			
Name: _____	IPMS No.: _____		
IPMS/USA		PO Box 1411	
Join or Renew Online at: www.ipmsusa.org		Riverview, FL 33568-1411	

ACKNOWLEDGEMENTS

Support Our Local Hobby Shops...

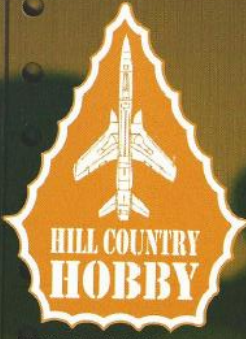
...for models, paints, books, decals, tools and all your modeling needs!

Special Orders Mail Orders

Dibble's Hobbies
The Excitement IS BUILDING!

1029 Donaldson Ave. Tues. - Sat., 10am - 6 pm
San Antonio, TX 78228 www.dibbleshobbies.com
210-735-7721 dibbleshobbies@gmail.com

Jeff, Mike and Joannie
dibbleshobbies@gmail.com



**HILL COUNTRY
HOBBY**

9355 BANDERA RD. #109
SAN ANTONIO, TEXAS 78250
(210) 681-2007

DAVID SCHMIDT
66ZOMBIES@GMAIL.COM

OPEN
TUES & WED: NOON - 6 P.M.
THURS, FRI & SAT: 10A.M. - 7P.M.
SUN: 1P.M. - 5P.M.

CLOSED MONDAY

David Schmidt
66zombies@gmail.com

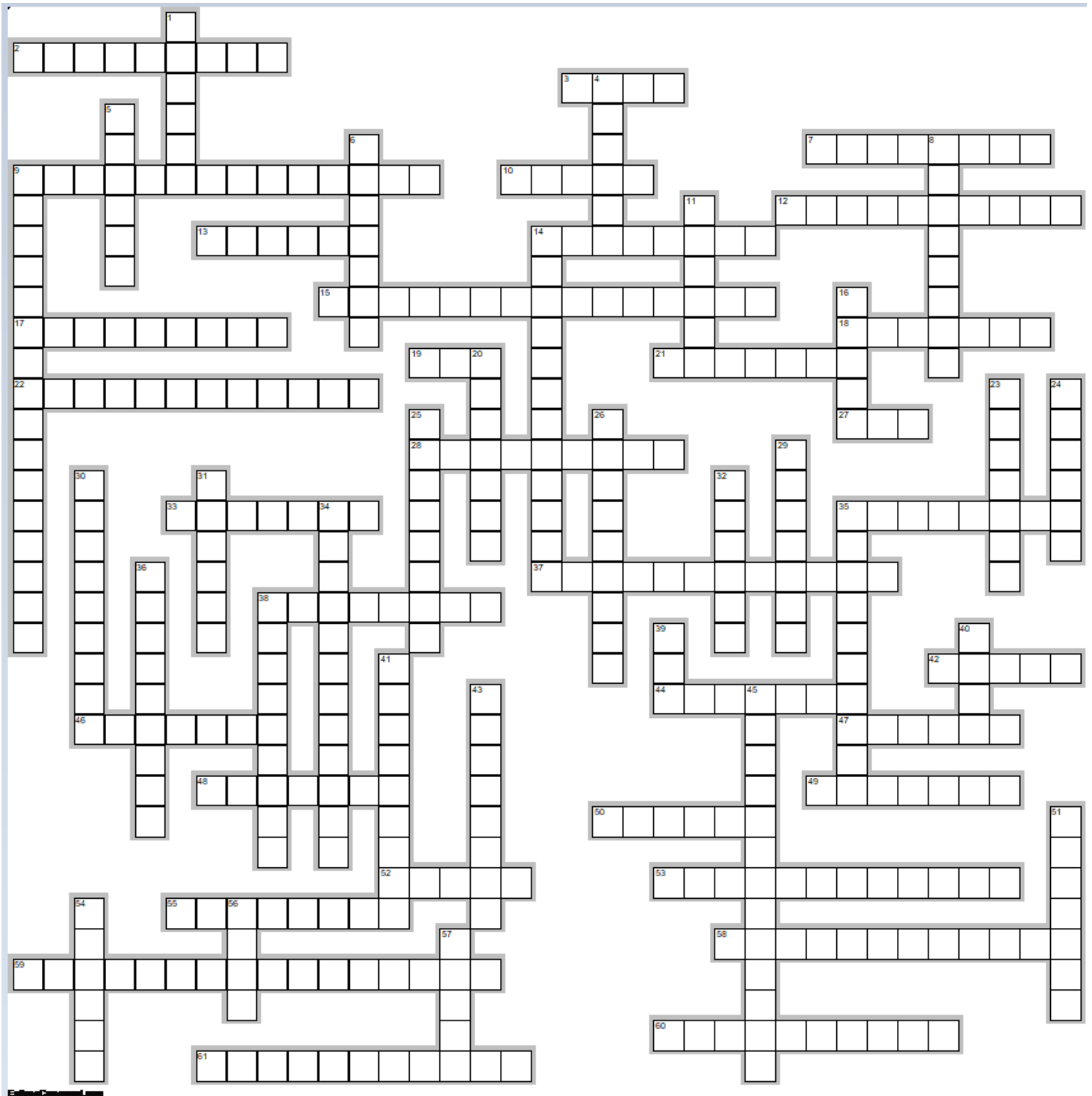
And our Meeting Site Sponsor:





ONE MORE THING...

Do you dare use a ballpoint pen?



Identify the kit manufacturers/distributors using these clues.

Across	Down
2. Yamato	1. Ferrari F40
3. F-16 XL	4. Dodge Challenger
7. IROC-Z Camaro	5. USS Kidd
9. Alien Invader	6. Apollo 27 Rocket
10. Messerschmitt Bf109	8. Salmson 2A2
12. McLaren MP4/4	9. Ford GT Super Detail Set
13. Su-27UB Flanker-C	11. 1/32 P-51
14. AT-38B Talon	14. Fokker D.V11
15. F-4J Phantom II	16. M3 Lee
17. P-51H	20. H-43B Huskie
18. M16MGMC	23. Soviet Railway Wagon
19. Batmobile	24. AT-AT
21. Faun L900	25. Westland Lysander
22. Scammell Pioneer Tank Transport	26. 1/16 M1A1
27. Space 1999 Eagle Transporter	29. Submarine Bunker
28. Chevy Camaro Hardtop	30. AH-6J Little Bird
33. Big Yamato	31. Rye Field Model
35. Nissan Skyline	32. Peugeot 403
37. B-18B	34. B-52H
38. Ford F-100 Flareside	35. Convair B-36D
42. Vomag Omnibus	36. Sturmtiger
44. Russian Sub	38. KC-97L Stratofreighter
46. F-104J	39. A-26B Invader
47. B-25H Mitchell	40. Sopwith F.1 Camel
48. Turtle Boat	41. BAZ-64022
49. F/A 22 Raptor	43. U.S. Navy Tanker
50. Ferrari 365	45. PZ. KPFW. IV. AUSF.J
52. P-80C	51. Power Loader
53. Gee Bee R-1 Racer	54. BF 109G
55. B-17G	56. Toon Tank
58. E-100 German Super Heavy Tank	57. Skoda RSO
59. Ammo Cases	
60. Bf110d-1/r1	
61. Godzilla	

(solution elsewhere in this issue)